



DCA400SSI4F

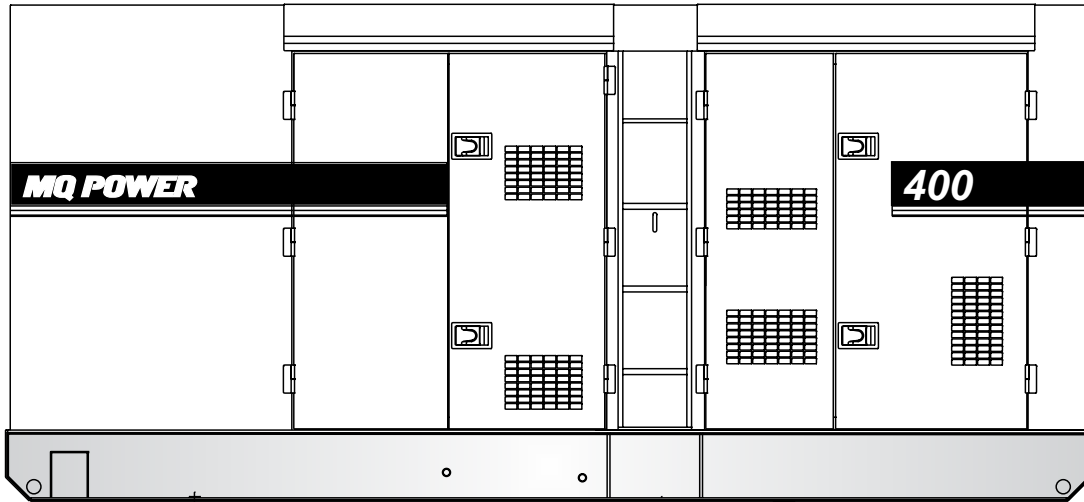
MQ POWER Whisperwatt™ Series

WhisperWatt™ 400

Prime Rating — 320 kW (400 kVA)

Standby Rating — 336 kW (420 kVA)

3-Phase, 60 Hertz, 0.8 PF



STANDARD FEATURES

- Heavy duty, 4-cycle, direct injection, turbocharged, charge air-cooled diesel engine provides maximum reliability.
- Brushless alternator reduces service and maintenance requirements and meets temperature rise standards for Class F insulation systems.
 - Open delta alternator design provides virtually unlimited excitation for maximum motor starting capability.
 - Automatic voltage regulator (AVR) provides precise regulation.
- Electronic governor system maintains frequency to $\pm 0.25\%$.
- Full load acceptance of standby nameplate rating in one step (NFPA 110, para 5-13.2.6).
- Sound attenuated, weather resistant, steel housing provides operation at 69 dB(A) at 23 feet. Fully lockable enclosure allows safe unattended operation.
- Internal fuel tank with direct reading fuel gauges are standard.
- E-coat primer with polyurethane enamel finish coat.
- Digital engine gauges including oil pressure, water temperature, battery volts, engine speed, and fuel level.
- Analog generator instrumentation including AC ammeter, AC voltmeter, frequency meter, ammeter phase selector switch, voltmeter phase selector switch, and voltage regulator adjustment potentiometer.
- ECU835 microprocessor-based digital generator controller.
 - Remote 2-wire start/stop control.
 - Operational temperature range of -40° to 85° C.
 - High visibility LCD display with heated screen and alphanumeric readout.
 - Modbus interface for gauge panel and expansion options.
- Automatic safety shutdown system monitors the water temperature, engine oil pressure, low coolant, overspeed, and overcrank. Warning lights indicate abnormal conditions.
- Complete power panel. Fully covered; three-phase terminals and single phase receptacles allow fast and convenient hookup for most applications including temporary power boxes, tools and lighting equipment. All are NEMA standard.
- Fuel/water separator. Removes condensation from fuel for extended engine life.
- Simultaneous single and three phase power.
- Voltage change-over board. Allows easy to change voltages as your applications require. 240/480 bus bar.
- Battery Switch.
- Emergency Stop Switch. When manually activated, shuts down generator in the event of an emergency.
- EPA emissions certified - Tier 4 Final emissions compliant.
 - Engine fitted with DOC and SCR.



DCA400SSI4F

MQ POWER Whisperwatt™ Series

SPECIFICATIONS

| Generator Specifications | |
|---|---|
| Design | Revolving field, Self-ventilated Drip-proof, Single bearing |
| No. of Poles | 4-pole |
| Excitation | Brushless with AVR |
| Standby Output | 336 KW (420 kVA) |
| Prime Output | 320 KW (400 kVA) |
| Generator RPM | 1800 |
| Voltage — 3Ø | 208, 220, 240, 416, 440, 480V Reconnectable |
| Voltage — 1Ø | 120, 127, 139, 240, 254, 277V Adjustable |
| Armature Connection | Star with neutral |
| Voltage Regulation (No load to full load) | ±0.5% |
| Power Factor | 0.8 |
| Frequency | 60 Hz |
| Frequency Regulation: No Load to Full Load | Isochronous under varying loads from no load to 100% rated load |
| Frequency Regulation: Steady State | ±0.25% of mean value for constant loads from no load to full load. |
| Insulation | Class F |
| Sound Level dB(A) Full load at 23 feet | 69 |

| Engine Specifications | |
|---------------------------|--|
| Make / Model | Isuzu / BQ-6WG1X |
| Emissions | EPA Tier 4 Final Certified |
| Starting System | Electric |
| Design | 4-cycle, water cooled, direct injection, turbocharged, charge air cooled, EGR, DOC, and SCR. |
| Displacement | 15681 cc |
| No. cylinders | 6 |
| Bore x Stroke | 147 x 154 mm |
| Gross Engine Power Output | 512.3 hp (382 kWm) |
| BMEP | 236 psi (1624 kPa) |
| Piston Speed | 1819 ft/min (9.24 m/s) |
| Compression Ratio | 16.5 : 1 |
| Engine Speed | 1800 rpm |
| Overspeed Limit | 2070 rpm |
| Oil Capacity | 15.1 gallons (57 liters) |
| Battery | 12V 200Ah x 2 (24 V Systems) |

| Fuel System | |
|--------------------------------|---------------------------|
| Recommended Fuel | ASTM-D975-No.1 & No.2-D* |
| Maximum Fuel Flow (per hour) | 98.8 gallons (374 liters) |
| Maximum Inlet Restriction (Hg) | 8.86 in (225 mm) |
| Fuel Tank Capacity | 55.5 gallons (210 liters) |
| Fuel Consumption | gph lph |
| At full load | 22.5 85.1 |
| At 3/4 load | 17.3 65.5 |
| At 1/2 load | 12.2 46.0 |
| At 1/4 load | 7.7 29.0 |
| DEF Tank Capacity | 14.8 gallons (56 liters) |

* - Use ultra-low sulfur diesel fuel.

| Cooling System | |
|--|----------------------------|
| Fan Load | 17.8 hp (13.3 kW) |
| Coolant Capacity (with radiator) | 19.4 gallons (73.6 liters) |
| Coolant Flow Rate (per minute) | 111 gallons (420 liters) |
| Heat Rejection to Coolant (per minute) | 12,606 Btu (13.3 MJ) |
| Maximum Coolant Friction Head | 20.3 psi (140 kPa) |
| Maximum Coolant Static Head | 29.5 feet (9.0 meters) |
| Ambient Temperature Rating | 104°F (40°C) |

| Air | |
|---------------------------------|-----------------------------------|
| Combustion Air | 872 cfm (24.7 m³/min) |
| Maximum Air Cleaner Restriction | 25 in. H ₂ O (6.2 kPa) |
| Alternator Cooling Air | 2790 cfm (79.0 m³/min) |
| Radiator Cooling Air | 14129 cfm (400 m³/min) |

| Exhaust System | |
|-----------------------|-------------------------------------|
| Gas Flow (full load) | 1635 cfm (46.3 m³/min) |
| Gas Temperature | 968°F (520°C) |
| Maximum Back Pressure | 180.7 in. H ₂ O (45 kPa) |

| Amperage | |
|-----------------------------------|---------------------|
| Rated Voltage | Maximum Amps |
| 1Ø 120 Volt | 888.9 Amps (4 wire) |
| 1Ø 240 Volt | 444.4 Amps (4 wire) |
| 3Ø 240 Volt | 962.3 Amps |
| 3Ø 480 Volt | 481.1 Amps |
| Main Line Circuit Breaker Rating | 1000 Amps |
| Over Current Relay Trip Set Point | 480 Amps |

WARRANTY*

Isuzu Engine

12 months from date of purchase with unlimited hours or 24 months from date of purchase with 2000 hours (whichever comes first).

Generator

24 months from date of purchase or 2000 hours (whichever occurs first).

Trailer

12 months excluding normal wear items.

*Refer to the express written, one-year limited warranty sheet for additional information.

NOTICE

Generator is not intended for use in enclosed areas or where free flow of air is restricted.

Backfeed to a utility system can cause electrocution and/or property damage. Do not connect to any building's electrical system except through an approved device.

Specifications are subject to change without notice.



DCA400SSI4F

MQ POWER Whisperwatt™ Series

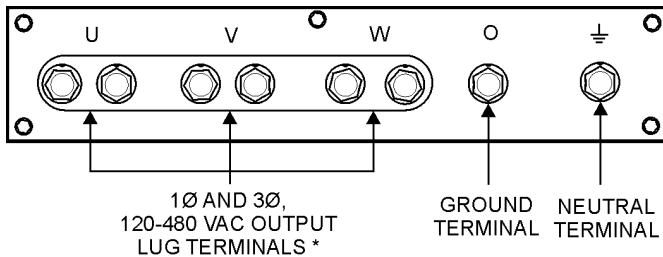
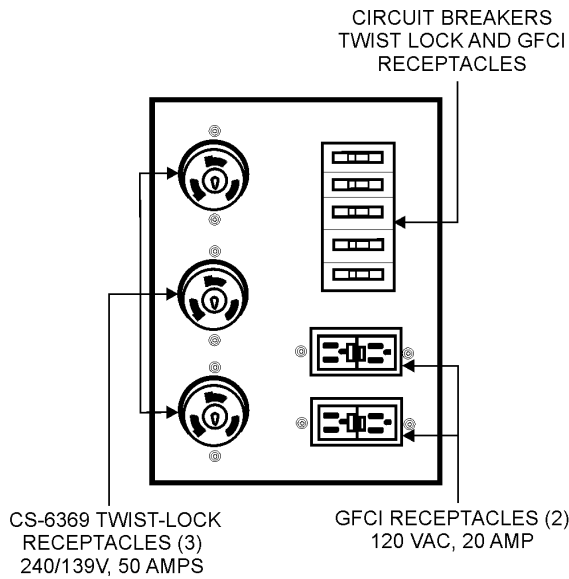
MQ POWER DECIBEL LEVELS

Our soundproof housing allows substantially lower operating noise levels than competitive designs. WhisperWatts are at home on construction sites, in residential neighborhoods, and at hospitals — just about anywhere.

- 90 — Subway / truck traffic
- 80 — Average city traffic
- 70 — Inside car at 60 mph
WhisperWatt at 23 feet
- 60 — Air conditioner at 20 feet
- 50 — Normal conversation



GENERATOR OUTPUT PANELS



OPTIONAL GENERATOR FEATURES

- **Battery charger** — provides fully automatic and self-adjusting charging to the generator's battery system.
- **Jacket water heater** — for easy starting in cold weather climates.
- **Special batteries** — long life batteries provide extra engine cranking power.
- **Spring Isolators** — provides extra vibration protection for standby applications.
- **Trailer mounted package** — highway legal trailer with electronic or surge brakes with double or triple axle configuration. Extra capacity fuel tanks are also available.

OPTIONAL CONTROL FEATURES

- **Cam-Loks** — provides quick disconnect alternative to bolt-on connectors.
- **Pin and Sleeve Connectors** — provides industry standard connectors for all voltage requirements.
- **Output cable** — available in any custom length and size configuration.

OPTIONAL FUEL CELL FEATURES

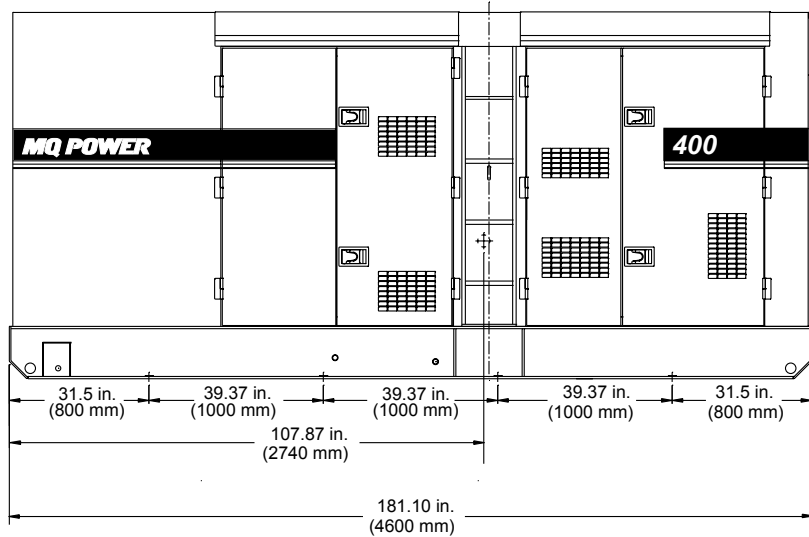
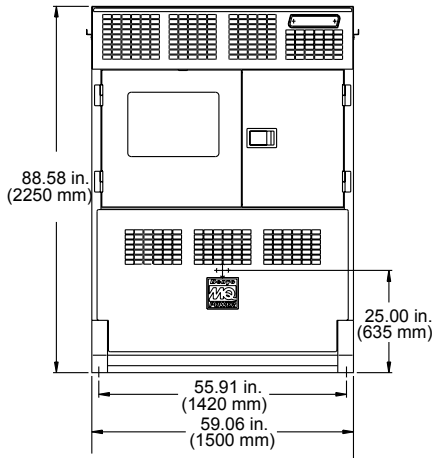
- **Trailer Fuel Tank** — a second fuel cell located in the trailer allows for extended run time.
- **Subbase fuel cells (double wall)** — additional fuel cell for extended runtime operation. Contains a leak sensor, low fuel level switch, and a secondary containment tank. UL142 listed.
- 12 hours of minimum run time.
- 24 hours of minimum run time.



DCA400SSI4F

MQ POWER Whisperwatt™ Series

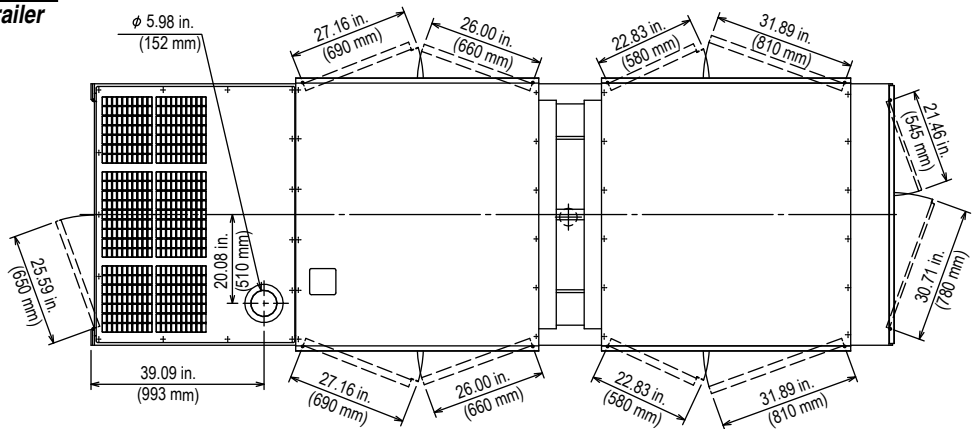
DIMENSIONS



Weight

| | |
|-----------------------------|------------------------|
| Dry Weight | 12,280 lbs. (5,570 kg) |
| Wet Weight | 13,184 lbs. (5,980 kg) |
| Max. Lifting Point Capacity | 16,500 lbs. (7,484 kg) |

Generator can be placed on MQ Power Trailer TRLR400XF3DA.



Manufactured by Denyo Co.

Your MultiQuip dealer is:

MULTIQUIP
 POST OFFICE BOX 6254
 CARSON, CA 90749
 310-537-3700 • 800-883-2551
 FAX: 310-604-3831
 E-MAIL: sales@multiquip.com
 WEBSITE: www.multiquip.com