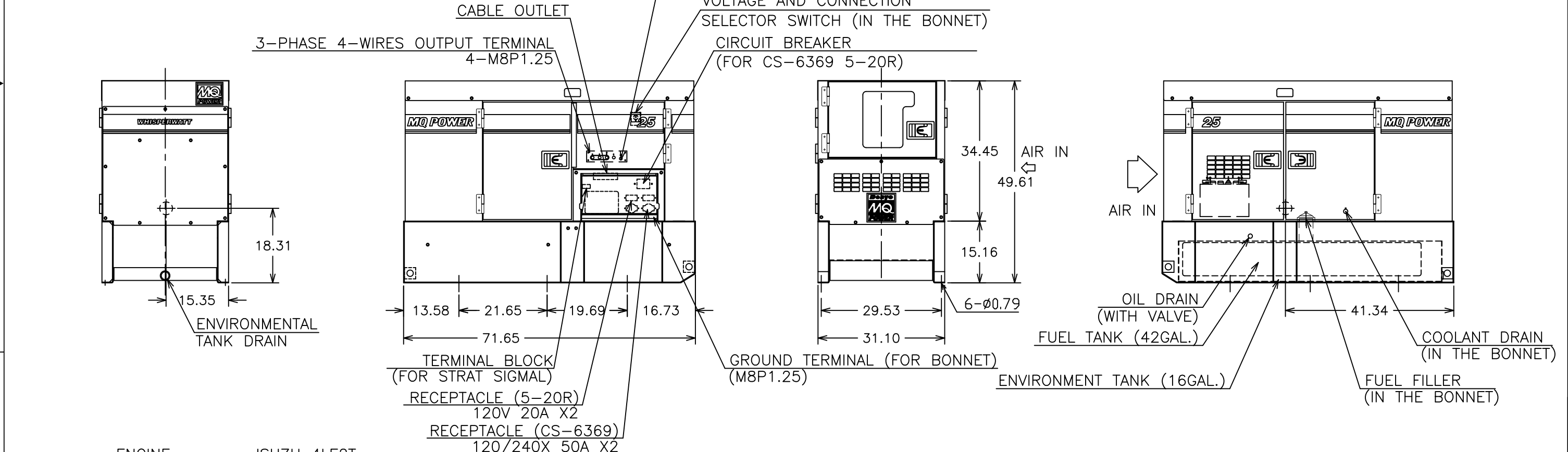
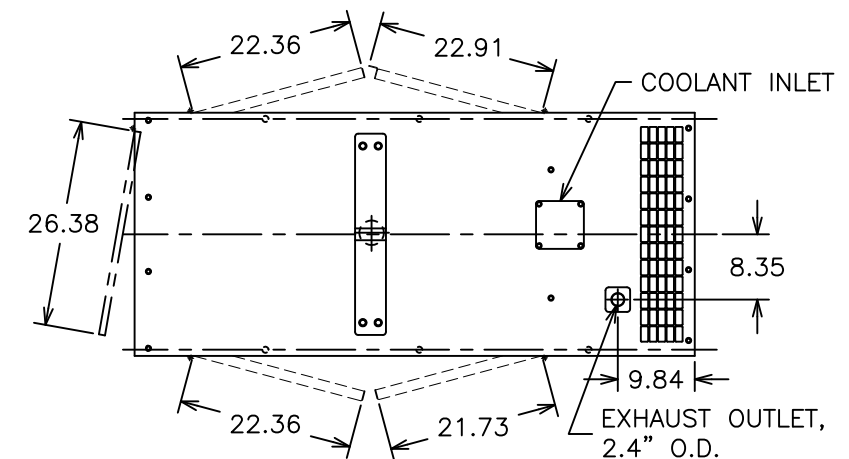
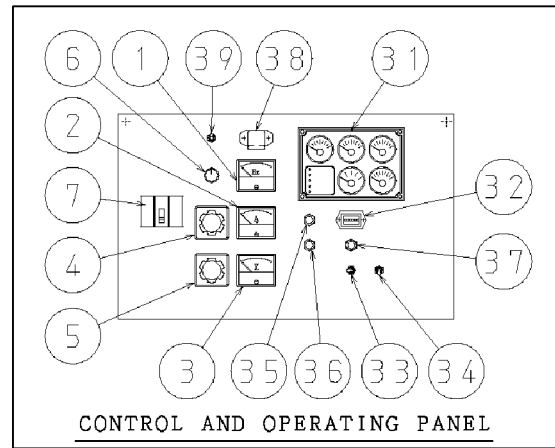


THIS DRAWING AND THE DATA DISCLOSED HEREIN OR HEREWITH IS CONFIDENTIAL AND PROPRIETARY AND IS NOT TO BE REPRODUCED, USED, OR DISCLOSED IN WHOLE OR IN PART TO ANYONE WITHOUT THE EXPRESSED WRITTEN PERMISSION OF MULTIQUIP COMPANY.

DWG. NO.		201827		REVISION		A		DATE		APPROVED	
ZONE	LTR	DESCRIPTION				DATE	APPROVED				
A	FINALIZED					7/5/13	JT				

CONTROL PANEL		OPERATING PANEL	
No.	NAME	No.	NAME
1	FREQUENCY METER	31	AUTO START/STOP CONTROLLER (ECU-750)
2	AC AMMETER		* OIL PRESSURE GAUGE
3	AC VOLTMETER		* WATER TEMPERATURE GAUGE
4	AMMETER, CHANGE-OVER SWITCH		* CHARGING VOLTMETER
5	VOLTMETER, CHANGE-OVER SWITCH		* FUEL GAUGE
6	VOLTAGE REGULATOR		* TACHOMETER (WARNING LAMP)
7	CIRCUIT BREAKER (3-PHASE)		* LOW OIL PRESSURE
			* HIGH COOLANT TEMPERATURE
			* OVER CRANK
			* OVER SPEED
			(LAMP)
			* ENGINE RUNNING
OPERATING PANEL			
No.	NAME	No.	NAME
36	WARNING LAMP (DIAGNOSTIC)	32	HOUR METER
37	PREHEAT LAMP	33	AUTO START/STOP SWITCH
38	PANEL LIGHT	34	ENGINE SPEED SWITCH
39	PANEL LIGHT SWITCH	35	FUEL LEAK DETECTED ALARM LAMP



ENGINE : ISUZU 4LE2T
 GENERATOR : DF-027012
 BATTERY : 27 (CCA 0°F 525A) x1
 FUEL TANK : 42 Gal.
 DRY WEIGHT : 1,795 lbs
 TOTAL WEIGHT : 2,137 lbs

⊕ : CENTER OF GRAVITY (FUEL: HALF; OIL, COOLANT, BATTERY: FULL)

UNLESS OTHERWISE SPECIFIED DIMENSIONS ARE IN INCHES TOLERANCES ARE :		CUSTOMER		MQ POWER TEL: (310) 537-3700/FAX: (310) 632-2656 18910 WILMINGTON AVENUE CARSON, CA 90746	
FRACTIONS	DECIMALS	ANGLES	JOB NO.		
±	.XX ±	±		OUTLINE DRAWING	
	.XXX ±		APPROVALS	DATE	DCA25SSIU4F (TIER 4)
DERIVED FROM DENYO M18043 00103		MATERIAL		DRAWN	J. TRAN 02/28/13
REV	DATE	FINISH		CHECKED	
A	7/5/13	DO NOT SCALE DRAWING		SALESMAN	
CAD CODE 201827		SCALE		SIZE D FSCM NO. DWG. NO. 201827 SHEET 1 / 1	

DWG. NO. 201827