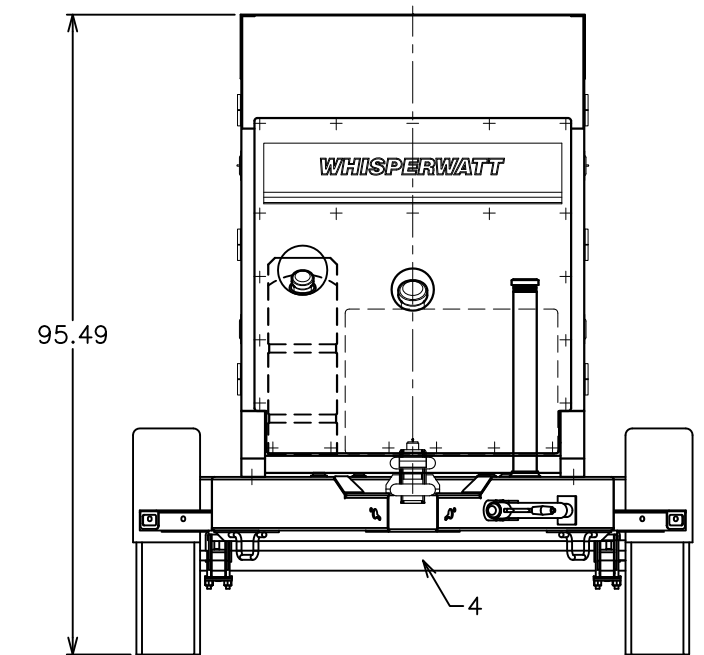
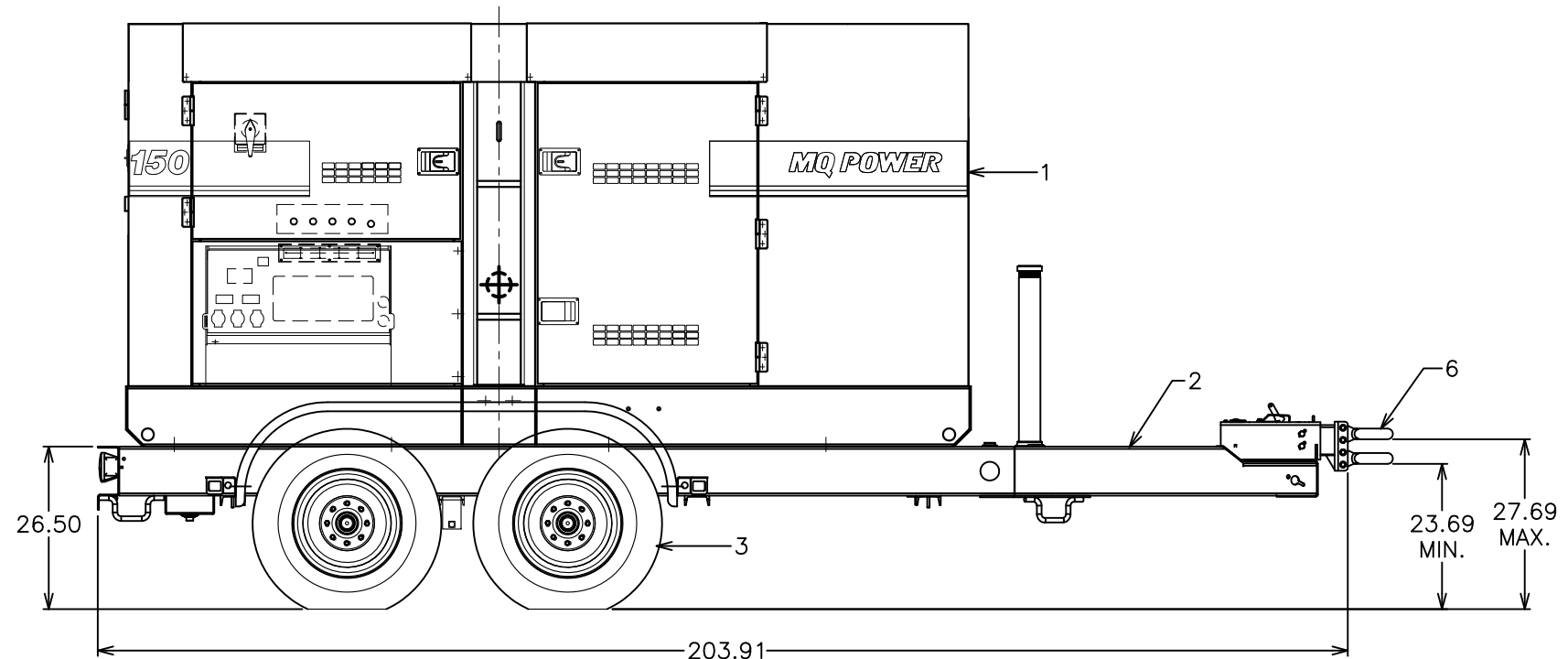
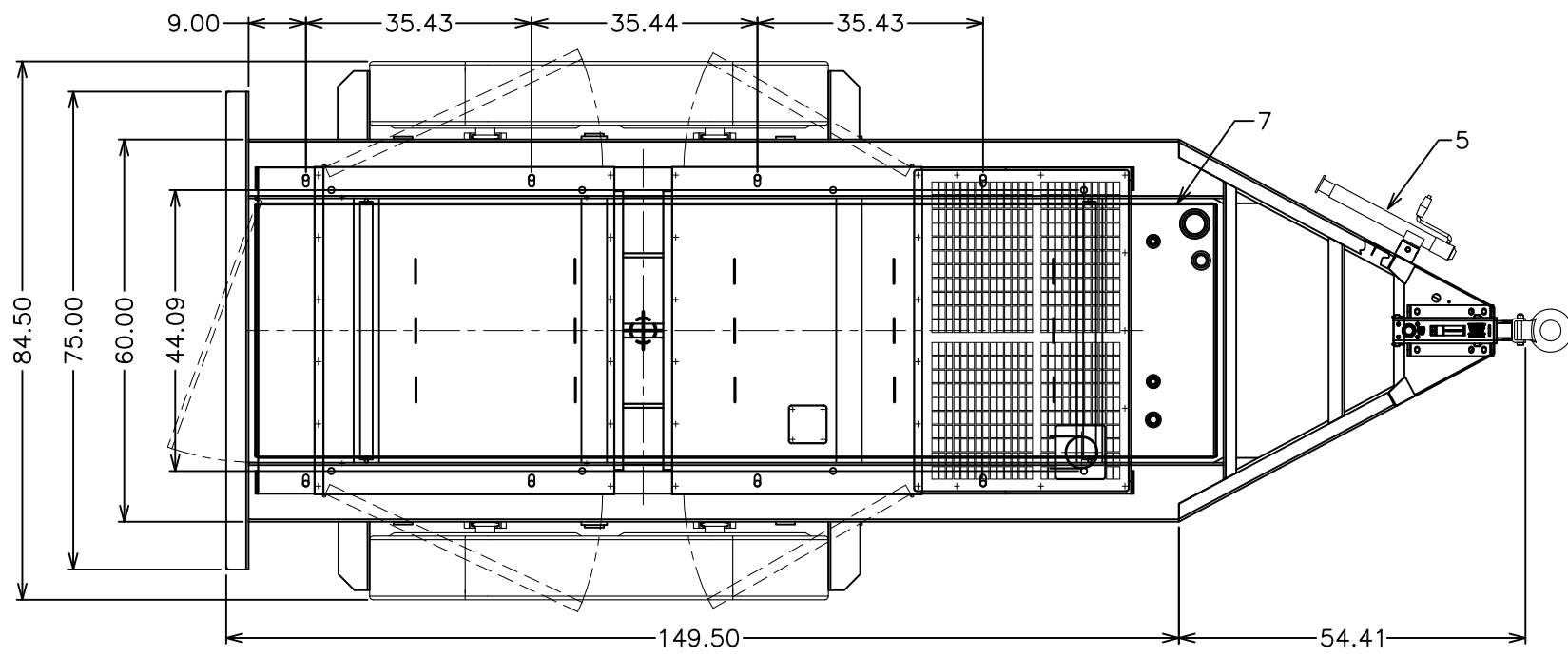


THIS DRAWING AND THE DATA DISCLOSED HEREIN OR HEREWITH IS CONFIDENTIAL AND PROPRIETARY AND IS NOT TO BE REPRODUCED, USED, OR DISCLOSED IN WHOLE OR IN PART TO ANYONE WITHOUT THE EXPRESSED WRITTEN PERMISSION OF MULTIQUIP COMPANY.

DWG. NO. 201920

PART LISTS				
ITEM	PART NUMBER	QTY	DESCRIPTION	MANUFACTURE
1	DCA150SSJU4F (TIER 4)	1	150KVA GENSET 150SSJU4F GENSET WEIGHT (WET): 7,489lbs	MQ POWER
2	TRLR180XFH	1	TRAILER (MODEL: TRLR180XF HYDRAULIC) TRAILER WT. ONLY: 2,580lbs G.V.W.R.: 12,000lbs TONGUE WT.: OVERALL DIMENSION: 204L X 85W X 96H	MQ POWER
3	EE47313	4	TIRE: ST235/80R-16 LR-E 3500# WHEEL: 16 X 6, 865 BC	TREDIT TIRE
4	EE55970	2	HYD. AXLE, SLIPPER SUSPENSION, 7000lbs	DEXTER AXLE
5	EE43518	1	JACK, 5K	CEQUENT
6	EE36264	1	3" PINTLE EYE	WALLACE FORGE
7	EE55287	1	FUEL TANK CAPACITY: 210GAL.	GDC



UNLESS OTHERWISE SPECIFIED DIMENSIONS ARE IN INCHES TOLERANCES ARE :		CUSTOMER		MQ POWER TEL: (310) 537-3700/FAX: (310) 632-2856 18910 WILMINGTON AVENUE CARSON, CA 90746	
FRACTIONS	DECIMALS	ANGLES	JOB NO.		
±	.XX ±	±		APPROVALS	
	.XXX ±			J. TRAN	DATE
					02/06/14
DERIVED FROM		MATERIAL		DRAWN	
REV	DATE	FINISH		CHECKED	
CAD CODE		DO NOT SCALE DRAWING		SALESMAN	
201920					
				DCA150SSJU4F GENSET MTD ON TRLR180XF HYD. TRAILER	
				SIZE	FSCM NO.
				D	201920
				SCALE	SHEET
				1/14	1/1

DWG. NO. 201920

REVISION

D

C

B

A

D

C

B

A

8

7

6

5

4

3

201920

1

8

7

6

5

4

3

2

1

GROSS VEHICLE WEIGHT RATING-CALCULATIONS: TRLR180XF-H TRAILER

GVWR	NUMBER AXLES	GAWR FRONT	GAWR REAR	TIRE SIZE	TIRE LOAD RANGE	TIRE LOAD	COLD INFLATION PRESSURE	RIM SIZE	BOLT PATTERN	RIM MAX LOAD	HYDRAULIC ACTUATOR RATING
12,000 (lbs)	2	7,000 (lbs)	7,000 (lbs)	ST235/80R16	E	3,500 (lbs)	80 (psi)	16 x 6 (in)	8 x 6.5 (in)	3,500 (lbs)	12,500 (lbs)

2" BALL RATING LIMIT	2" BALL VERTICAL LIMIT	COUPLER RATING 2 5/16" BALL	2 5/16" BALL VERTICAL LIMIT	COUPLER RATING 3" PINTLE	3" PINTLE VERTICAL LIMIT	TRAILER WEIGHT (DRY)	GENSET WEIGHT (WET) DCA150SSJU4F	FUEL CAPACITY TRAILER	TOTAL FUEL WEIGHT	TOTAL WEIGHT OF TRAILER (UNIT & FUEL)
N/A	N/A	14,000 (lbs)	1,200 (lbs)	20,000 (lbs)	2,000 (lbs)	2,580 (lbs)	7,489 (lbs)	210 (gal)	1491 (lbs)	11,560 (lbs)

GROSS VEHICLE WEIGHT CALCULATION (Hydraulic)

GAWR	7,000 x 2 =	14,000 lbs
Tire Load Rating	3,500 x 4 =	14,000 lbs
Tire Rim MAX Load Rating	3,500 x 4 =	14,000 lbs
Actuator Rating	DEMCO #10 =	12,500 lbs
Coupler Rating	2" BALL =	N/A lbs
Coupler Rating	2 5/16" BALL =	14,000 lbs
Coupler Rating	3" PINTLE =	20,000 lbs
Total Weight - Trailer/Unit/Fuel =		11,560 lbs
Less Axles =		470 lbs
Less Wheel & Tire =		320 lbs
Total Trailer/Cargo Weight =		10,770 lbs
GROSS VEHICLE WEIGHT RATING:		12,000 lbs

Coupler Vertical Limit (lbs) =	N/A	2" BALL
Coupler Vertical Limit (lbs) =	1,200 lbs	2 5/16" BALL
Coupler Vertical Limit (lbs) =	2,000 lbs	3" PINTLE
(Couplers mfg. by Wallace Forge)		

Certified Gross Vehicle Weight =	lbs w/Fuel
Certified Gross Tongue Weight =	lbs w/Fuel
Tongue Weight - % Total Load =	#DIV/0!

NOTE: THE GVWR ASSIGNMENT FOR THIS TRAILER COMPLIES WITH NHTSA GUIDELINES.

GROSS VEHICLE WEIGHT RATING-CALCULATIONS: TRLR180XF-E TRAILER

GVWR	NUMBER AXLES	GAWR FRONT	GAWR REAR	TIRE SIZE	TIRE LOAD RANGE	TIRE LOAD	COLD INFLATION PRESSURE	RIM SIZE	BOLT PATTERN	RIM MAX LOAD	ELECTRIC ADAPTER RATING
12,000 (lbs)	2	7,000 (lbs)	7,000 (lbs)	ST235/80R16	E	3,500 (lbs)	80 (psi)	16 x 6 (in)	8 x 6.5 (in)	3,500 (lbs)	(lbs)

2" BALL RATING LIMIT	2" BALL VERTICAL LIMIT	COUPLER RATING 2 5/16" BALL	2 5/16" BALL VERTICAL LIMIT	COUPLER RATING 3" PINTLE	3" PINTLE VERTICAL LIMIT	TRAILER WEIGHT (DRY)	GENSET WEIGHT (WET) DCA150SSJU4F	FUEL CAPACITY TRAILER	TOTAL FUEL WEIGHT	TOTAL WEIGHT OF TRAILER (UNIT & FUEL)
N/A	N/A	14,000 (lbs)	1,200 (lbs)	20,000 (lbs)	2,000 (lbs)	2,548 (lbs)	7,489 (lbs)	210 (gal)	1491 (lbs)	11,528 (lbs)

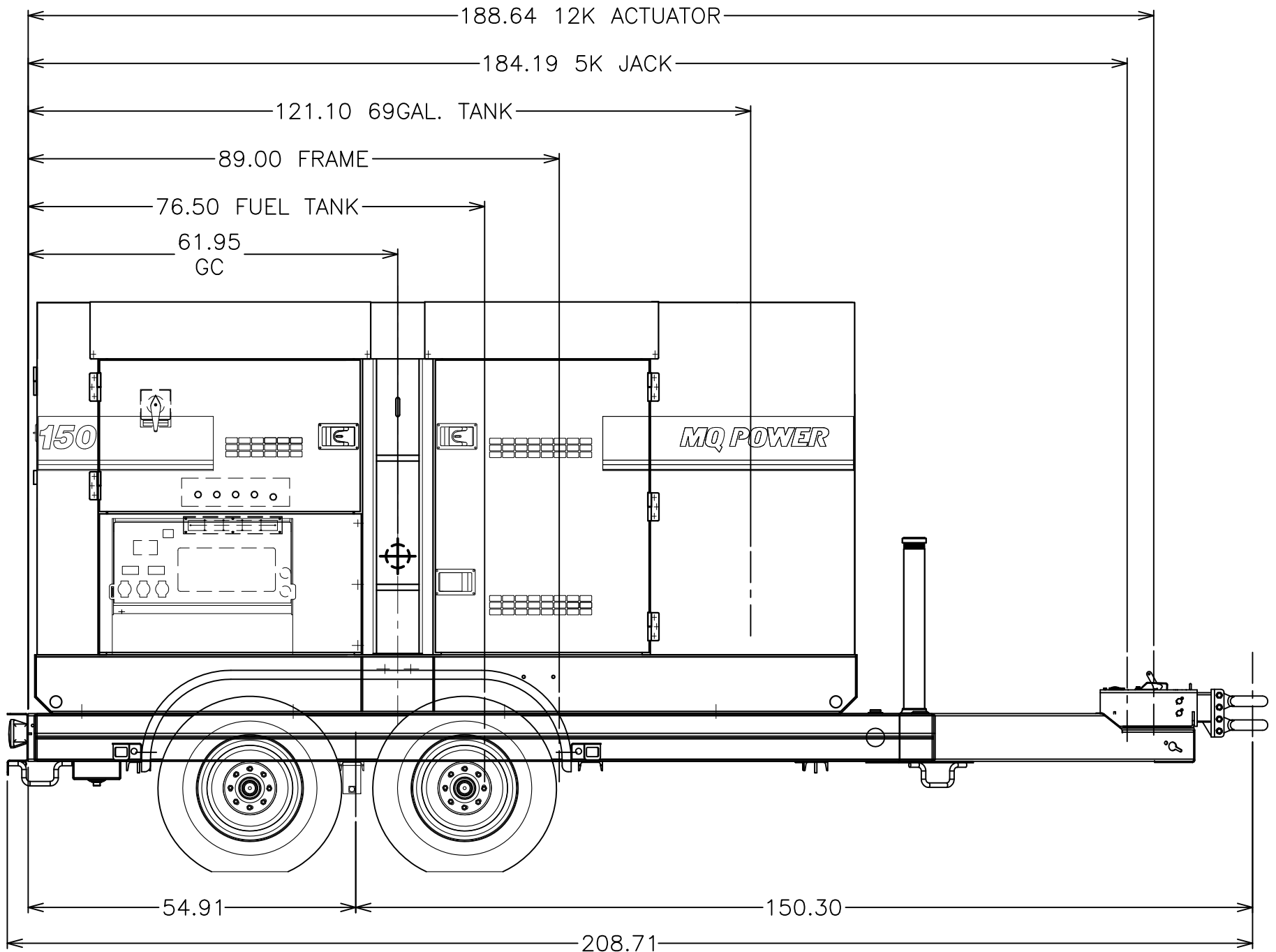
GROSS VEHICLE WEIGHT CALCULATION (Electric)

GAWR	7,000 x 2 =	14,000 lbs
Tire Load Rating	3,500 x 4 =	14,000 lbs
Tire Rim MAX Load Rating	3,500 x 4 =	14,000 lbs
Electric Adapter Rating	=	0 lbs
Coupler Rating	2" BALL =	N/A lbs
Coupler Rating	2 5/16" BALL =	14,000 lbs
Coupler Rating	3" PINTLE =	20,000 lbs
Total Weight - Trailer/Unit/Fuel =		11,528 lbs
Less Axles =		470 lbs
Less Wheel & Tire =		320 lbs
Total Trailer/Cargo Weight =		10,738 lbs
GROSS VEHICLE WEIGHT RATING:		12,000 lbs

Coupler Vertical Limit (lbs) =	N/A	2" BALL
Coupler Vertical Limit (lbs) =	1,200 lbs	2 5/16" BALL
Coupler Vertical Limit (lbs) =	2,000 lbs	3" PINTLE
(Couplers mfg. by Wallace Forge)		

Certified Gross Vehicle Weight =	lbs w/Fuel
Certified Gross Tongue Weight =	lbs w/Fuel
Tongue Weight - % Total Load =	#DIV/0!

NOTE: THE GVWR ASSIGNMENT FOR THIS TRAILER COMPLIES WITH NHTSA GUIDELINES.



DCA150SSJU4F GENSET MOUNTED ON TRLR180XFH TRAILER

TRLR180XF Trailer Weight and Balance Spreadsheet

DCA150SSJU4F

FULL

Date: 02/07/2014

Frame OAL:	208.71
Condition: Full Fuel (210Gal.)	210
Condition: Internal Fuel (69Gal.)	69
Condition: DEF Fuel (14.5Gal.)	14.5
Distance from End of the Trailer to Center Line of Axle(s) Set(s):	54.91

ITEM	WEIGHT (LBS)	DISTANCE FROM REAR	DISTANCE FROM EYE	MOMENT-EYE
Frame	790	89.00	119.71	94,571
Actuator, 12K	54	188.64	20.07	1,084
Jack, 5K	30	184.19	24.52	736
Fuel Tank	525	76.50	132.21	69,410
Fuel @210 Gallons	103	76.50	132.21	13,611
DCA150SSJUF4 (Dry)	6,608	61.95	146.76	969,790
Fuel @69 Gallons	490	121.00	87.71	42,969
DEF Fuel @14.5 Gallons	103	121.00	87.71	9,030
Sum Totals	8,703			1,201,201

Drawbar % of Total Load	10.3%
Drawbar Load	893
Tandem Axles Loading %	89.7%
Tandem Axles Loading %	7,810
Tandem Location from Eye	153.80
Tandem Location from Rear	54.91

CG from Eye (inch)	138
CG from Back (inch)	71
X (Tandem Location After CG)	15.78

Axle Rating/each	
------------------	--

TRLR180XF Trailer Weight and Balance Spreadsheet

DCA150SSJU4F

EMPTY

Date: 02/07/2014

Frame OAL:	208.71
------------	--------

Condition: Full Fuel (210Gal.)	0
--------------------------------	---

Condition: Internal Fuel (69Gal.)	0
-----------------------------------	---

Condition: DEF Fuel (14.5Gal.)	0
--------------------------------	---

Distance from End of the Trailer to Center Line of Axle(s) Set(s):	54.91
--	-------

ITEM	WEIGHT (LBS)	DISTANCE FROM REAR	DISTANCE FROM EYE	MOMENT-EYE
Frame	790	89.00	119.71	94,571
Actuator, 12K	54	188.64	20.07	1,084
Jack, 5K	30	184.19	24.52	736
Fuel Tank	525	76.50	132.21	69,410
Fuel @210 Gallons	0	76.50	132.21	0
DCA150SSJUF4 (Dry)	6,608	61.95	146.76	969,790
Fuel @69 Gallons	0	121.00	87.71	0
DEF Fuel @14.5 Gallons	0	121.00	87.71	0
Sum Totals	8,007			1,135,591

Drawbar % of Total Load	7.8%
Drawbar Load	623
Tandem Axles Loading %	92.2%
Tandem Axles Loading %	7,384
Tandem Location from Eye	153.80
Tandem Location from Rear	54.91

CG from Eye (inch)	142
CG from Back (inch)	67
X (Tandem Location After CG)	11.98

Axle Rating/each	
------------------	--

8

7

6

5

4

3

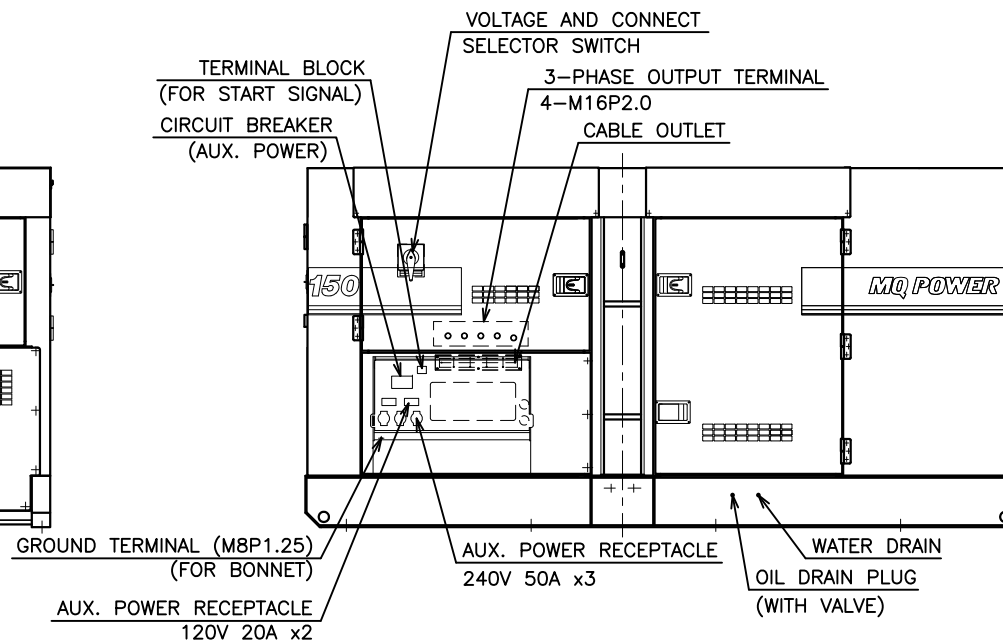
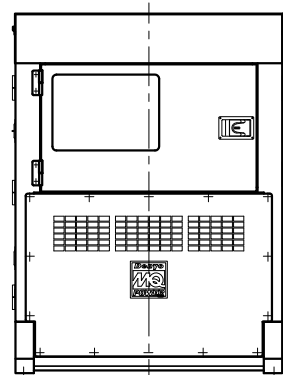
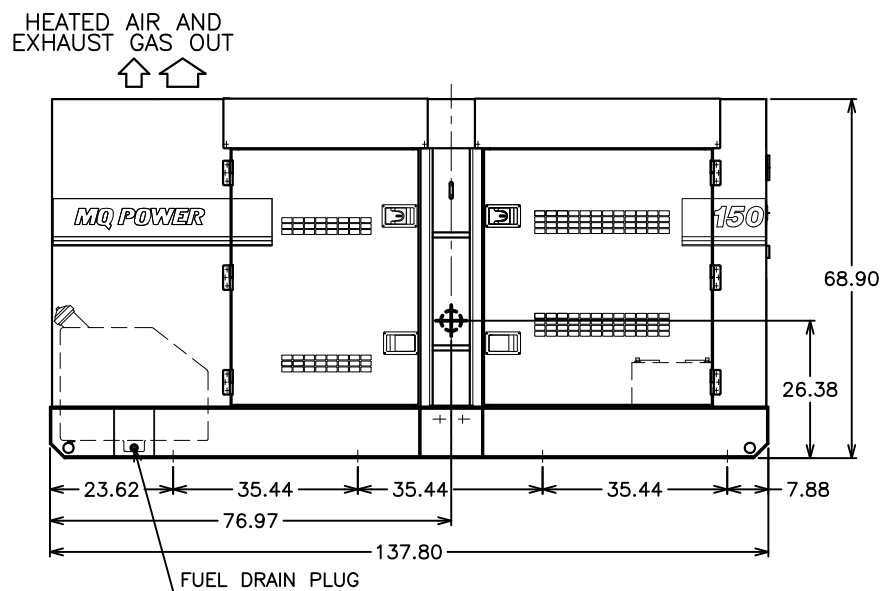
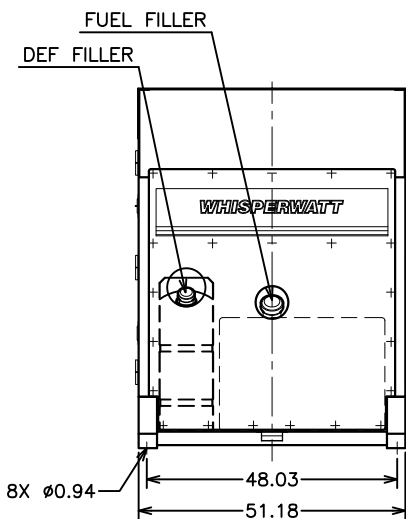
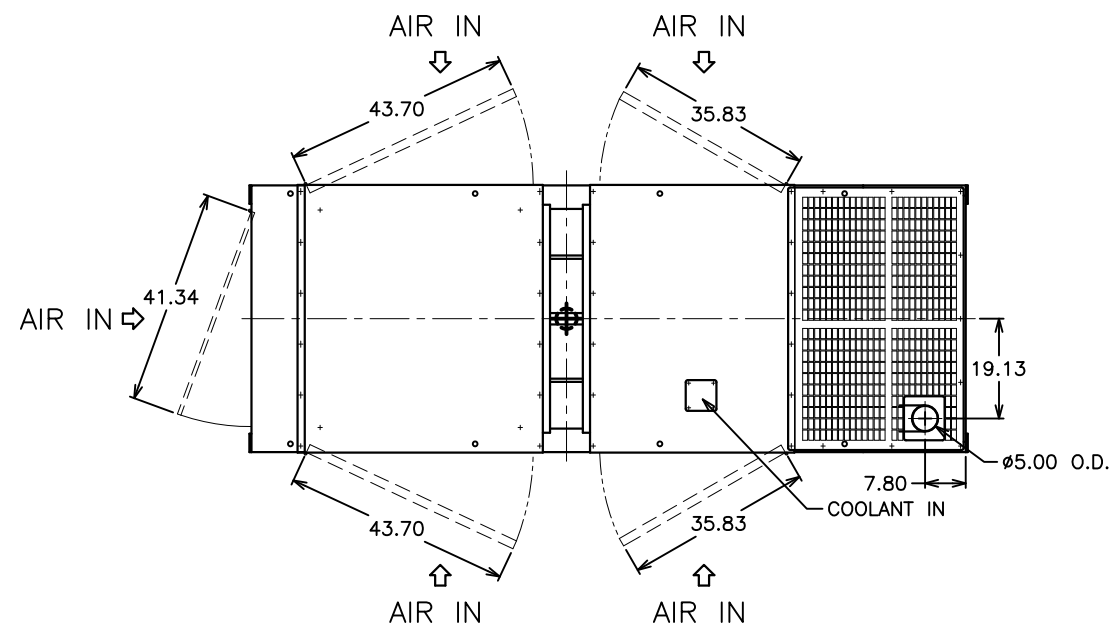
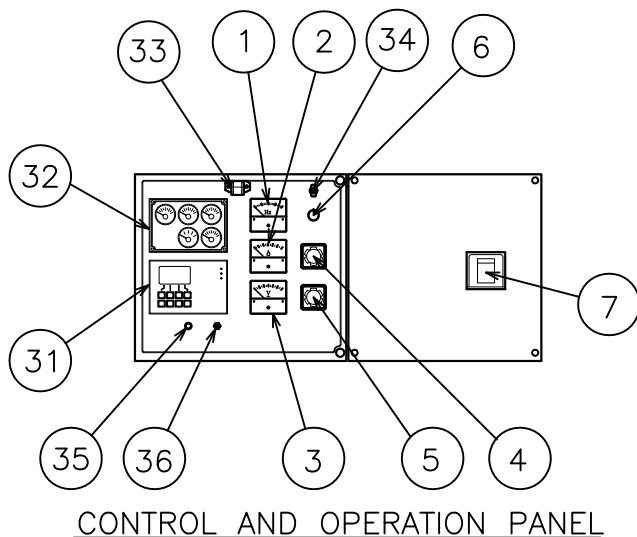
201914

1

THIS DRAWING AND THE DATA DISCLOSED HEREIN OR HEREWITH IS CONFIDENTIAL AND PROPRIETARY AND IS NOT TO BE REPRODUCED, USED, OR DISCLOSED IN WHOLE OR IN PART TO ANYONE WITHOUT THE EXPRESSED WRITTEN PERMISSION OF MULTIQUIP COMPANY.

REVISIONS				
ZONE	LTR	DESCRIPTION	DATE	APPROVED

CONTROL PANEL		OPERATING PANEL	
No.	NAME	No.	NAME
1	FREQUENCY METER	31	AUTO START/STOP CONTROLLER (ECU CONTROLLER)
2	AC AMMETER	32	GAUGE UNIT ASSY
3	AC VOLTMETER		OIL PRESSURE GAUGE
4	AMMETER CHANGE-OVER SWITCH		WATER TEMPERATURE GAUGE
5	VOLTMETER CHANGE-OVER SWITCH		CHARGING VOLTMETER
6	VOLTAGE REGULATOR		FUEL GAUGE
7	CIRCUIT BREAKER		TACHOMETER
8		33	PANEL LIGHT
9		34	PANEL LIGHT SWITCH
10		35	HOUR CHECK BUTTON
11		36	AUTO START/STOP SWITCH
12			



ENGINE	: JOHN DEERE 6068HFG08
GENERATOR	: DB-1651C
BATTERY SIZE	: 4D (CCA 0°F 1050A) X1
FUEL TANK	: 69Gal. (260L)
DEF TANK	: 14.5Gal. (55L)
DRY WEIGHT	: 6,608 lbs (3000kg)
WET WEIGHT	: 7,489 lbs (3400kg)

⊕ : CENTER OF GRAVITY (FUEL: HALF; OIL, COOLANT, BATTERY: FULL)

UNLESS OTHERWISE SPECIFIED DIMENSIONS ARE IN INCHES TOLERANCES ARE : FRACTIONS DECIMALS ANGLES ± .XX ± ± .XXX ±

CUSTOMER: MQ POWER
JOB NO.:
APPROVALS: J. TRAN
DATE: 02/03/14

MQ POWER
TEL: (310) 537-3700/FAX: (310) 632-2656
18910 WILMINGTON AVENUE
CARSON, CA 90746

DERIVED FROM	M38043 00103
REV	DATE
CAD CODE	201914

MATERIAL: DO NOT SCALE DRAWING

DRAWN	J. TRAN
CHECKED	
SALESMAN	

OUTLINE DRAWING		
DCA150SSJU4F (TIER 4)		
SIZE	FSCM NO.	DWG. NO.
D		201914
SCALE		SHEET
1/18		1 / 1

8

7

6

5

4

3

2

1

201914