

8

7

6

5

4

3

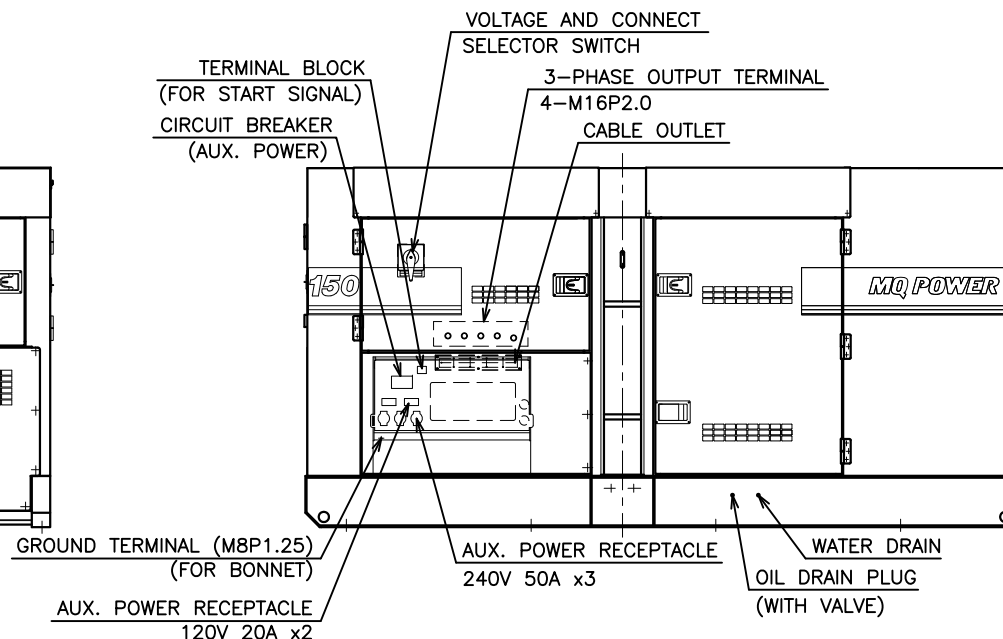
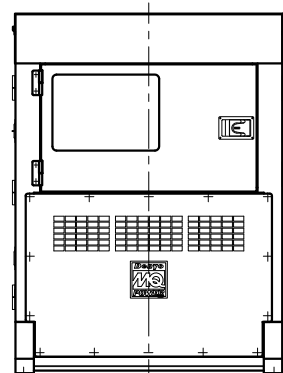
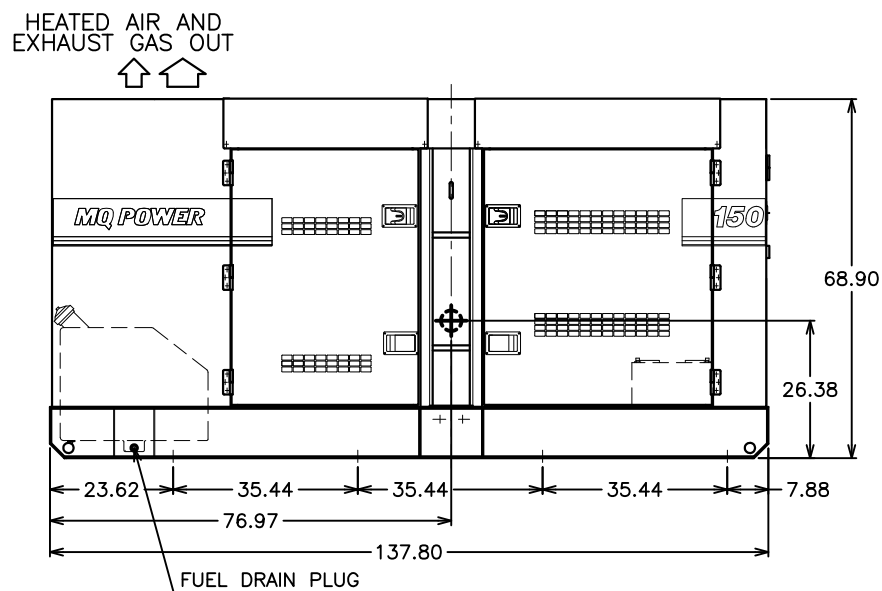
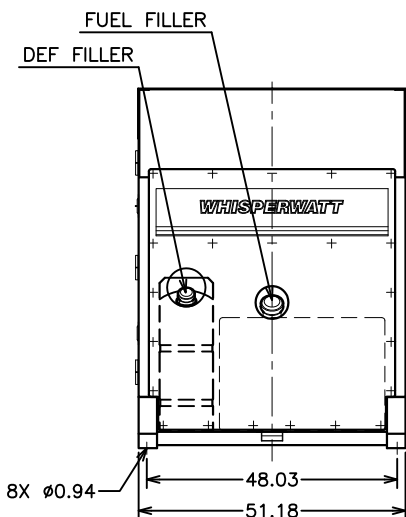
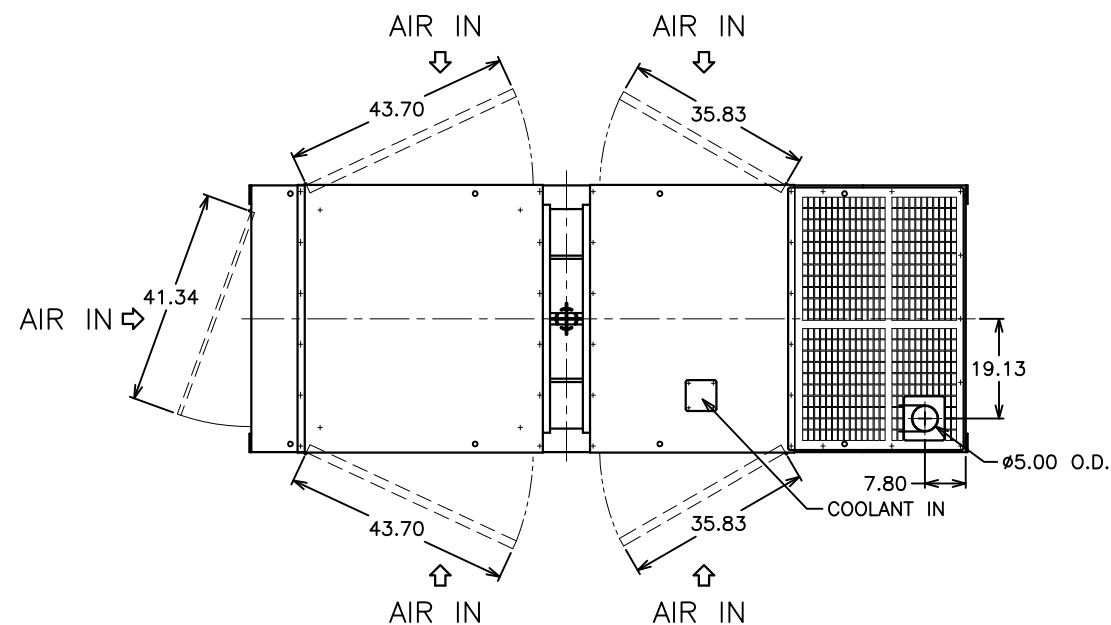
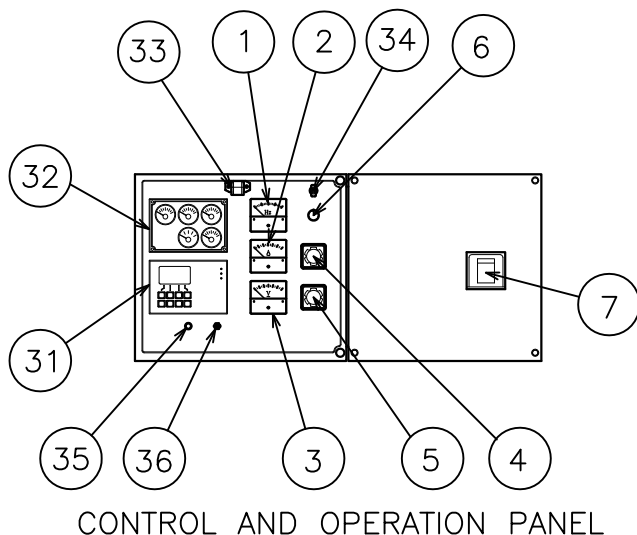
201914

1

THIS DRAWING AND THE DATA DISCLOSED HEREIN OR HEREWITH IS CONFIDENTIAL AND PROPRIETARY AND IS NOT TO BE REPRODUCED, USED, OR DISCLOSED IN WHOLE OR IN PART TO ANYONE WITHOUT THE EXPRESSED WRITTEN PERMISSION OF MULTIQUIP COMPANY.

REVISIONS				
ZONE	LTR	DESCRIPTION	DATE	APPROVED

CONTROL PANEL		OPERATING PANEL	
No.	NAME	No.	NAME
1	FREQUENCY METER	31	AUTO START/STOP CONTROLLER (ECU CONTROLLER)
2	AC AMMETER	32	GAUGE UNIT ASSY OIL PRESSURE GAUGE WATER TEMPERATURE GAUGE CHARGING VOLTMETER FUEL GAUGE TACHOMETER
3	AC VOLTMETER	33	PANEL LIGHT
4	AMMETER CHANGE-OVER SWITCH	34	PANEL LIGHT SWITCH
5	VOLTMETER CHANGE-OVER SWITCH	35	HOURLY CHECK BUTTON
6	VOLTAGE REGULATOR	36	AUTO START/STOP SWITCH
7	CIRCUIT BREAKER		
8			
9			
10			
11			
12			



ENGINE	: JOHN DEERE 6068HFG08
GENERATOR	: DB-1651C
BATTERY SIZE	: 4D (CCA 0°F 1050A) X1
FUEL TANK	: 69Gal. (260L)
DEF TANK	: 14.5Gal. (55L)
DRY WEIGHT	: 6,608 lbs (3000kg)
WET WEIGHT	: 7,489 lbs (3400kg)

⊕ : CENTER OF GRAVITY (FUEL: HALF; OIL, COOLANT, BATTERY: FULL)

UNLESS OTHERWISE SPECIFIED DIMENSIONS ARE IN INCHES TOLERANCES ARE :  
FRACTIONS DECIMALS ANGLES  
± .XX ± ±  
.XXX ±

CUSTOMER

JOB NO.

APPROVALS

DATE

DRAWN

02/03/14

CHECKED

SALESMAN

**MQ POWER**

TEL: (310) 537-3700/FAX: (310) 632-2656  
18910 WILMINGTON AVENUE  
CARSON, CA 90746

OUTLINE DRAWING  
DCA150SSJU4F (TIER 4F)

SIZE

D

FSCM NO.

SCALE

1/18

DWG. NO.

201914

SHEET

1 / 1

DERIVED FROM  
M38043 00103

REV DATE

CAD CODE  
201914

MATERIAL

FINISH

DO NOT SCALE DRAWING

201914

8

7

6

5

4

3

2

1